

Joint
Development
Control
Committee
18 September 2024



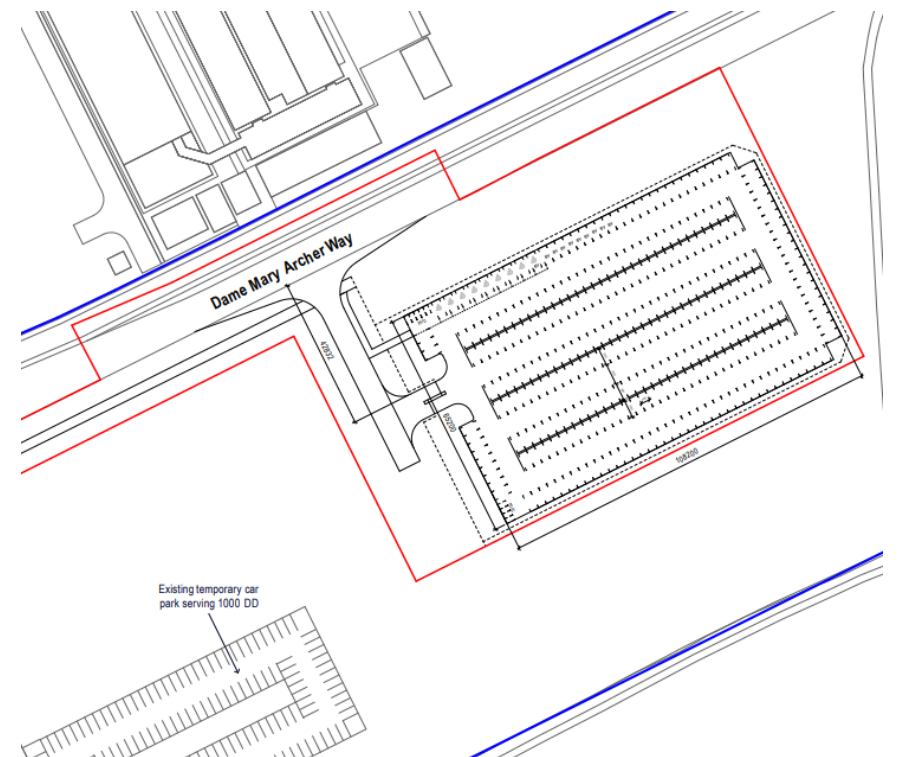
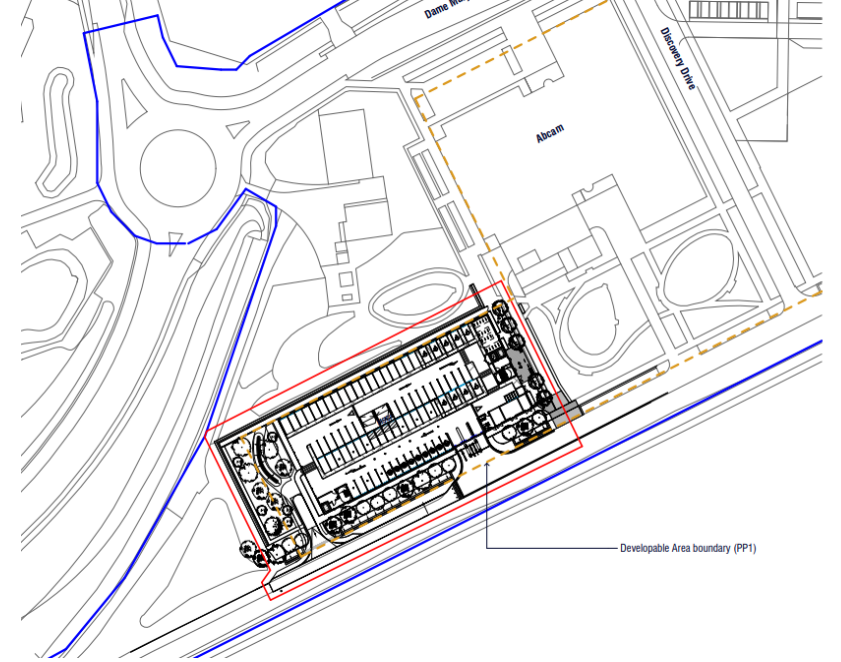
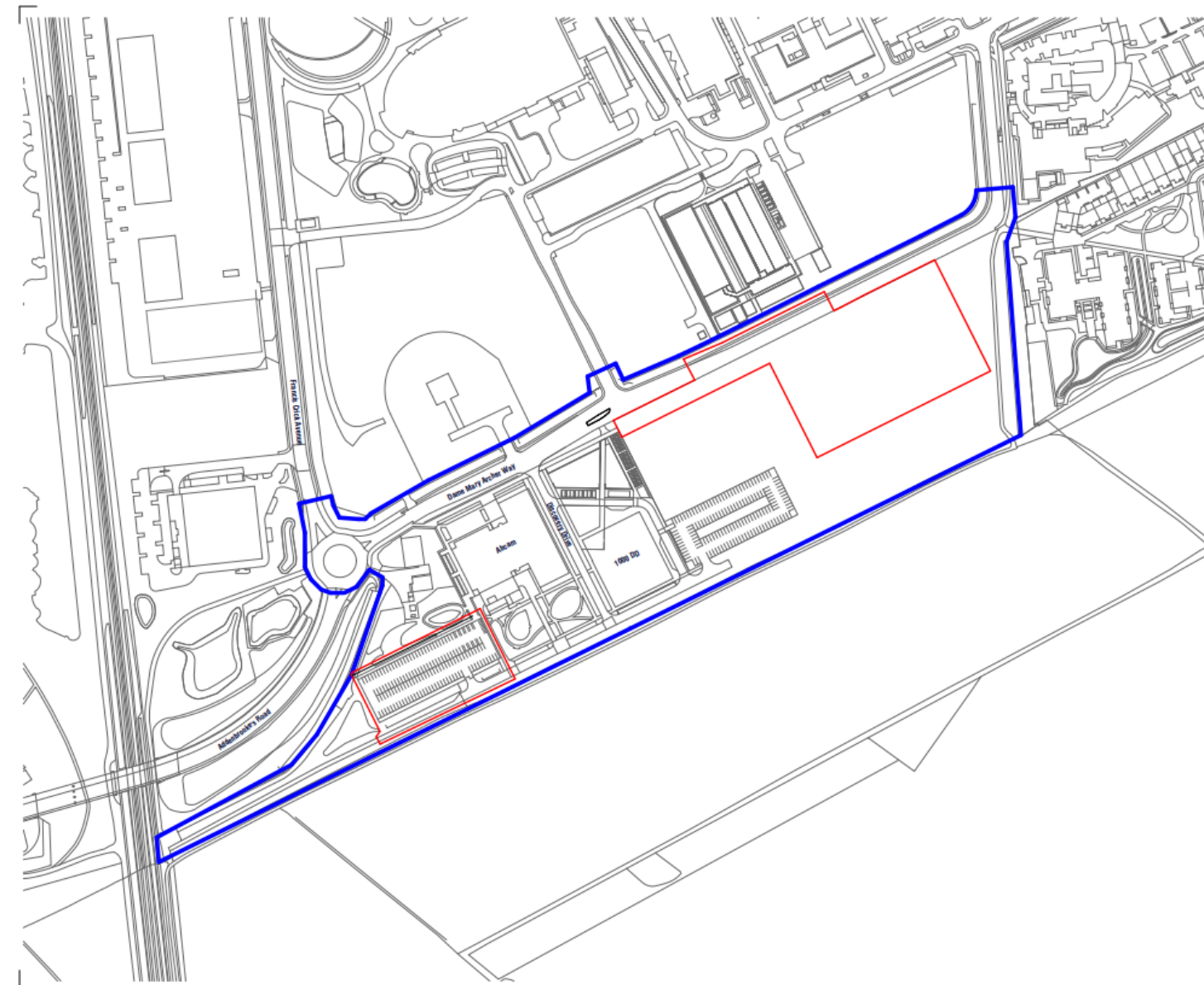
GREATER CAMBRIDGE
SHARED PLANNING

24/01589/REM

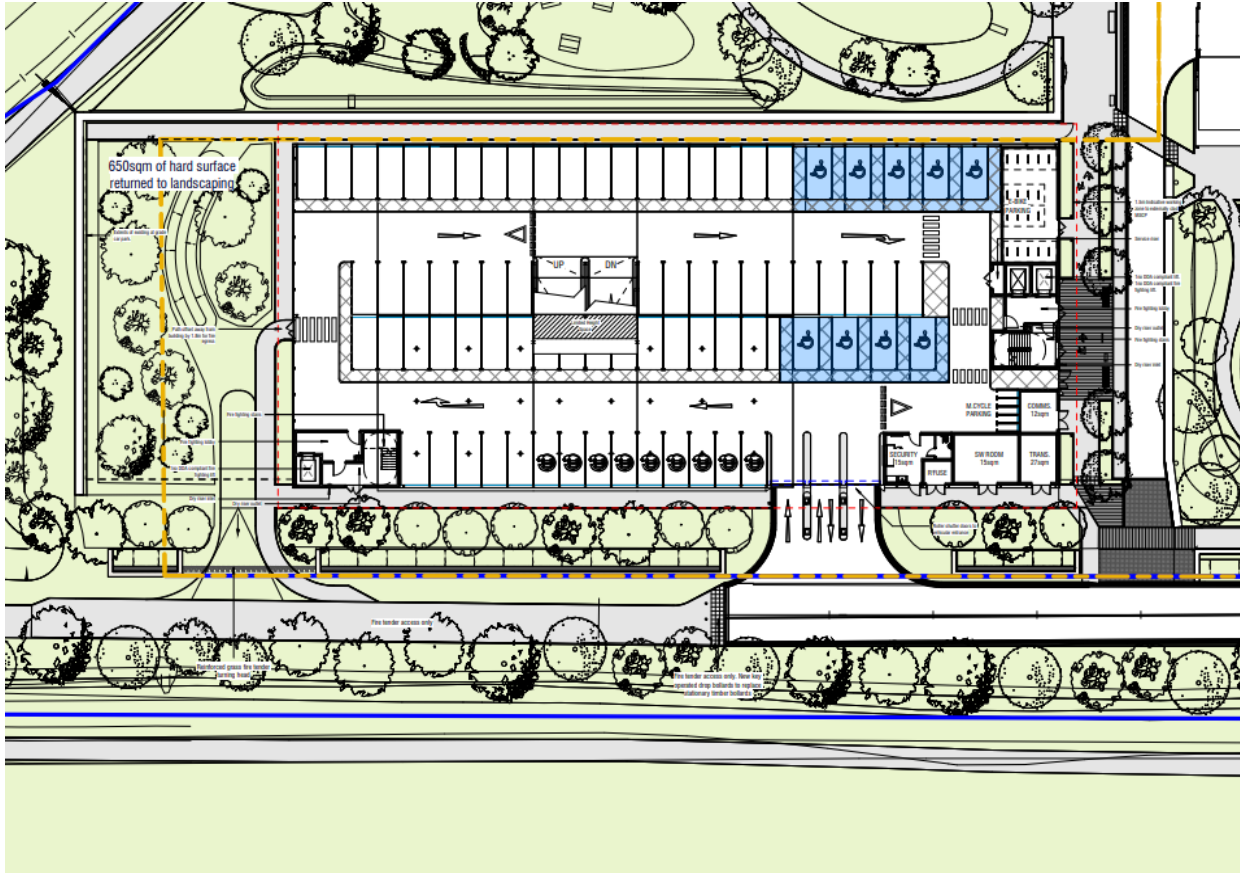
Site address: Cambridge Biomedical Campus,
Dame Mary Archer Way, Cambridge, Cambridgeshire, CB2 0AJ

Proposal: Reserved matters application pursuant to 16/0176/OUT for all matters (access, appearance, landscaping, layout and scale) relating to the development of a multi-storey car park and a temporary surface car park as part of the phased development and the discharge of conditions 8 (transport spurs), 10 (energy demand), 14 (EV Charging), 31 (on plot cycle and pedestrian facilities), 33 (car parking spaces), 36 (disabled car parking spaces), 37 (cycle parking spaces), 39 (ecological conservation management plan), 41 (drainage), 43 (sustainability), 48 (waste), 49 (landscape) of planning permission 16/0176/OUT.

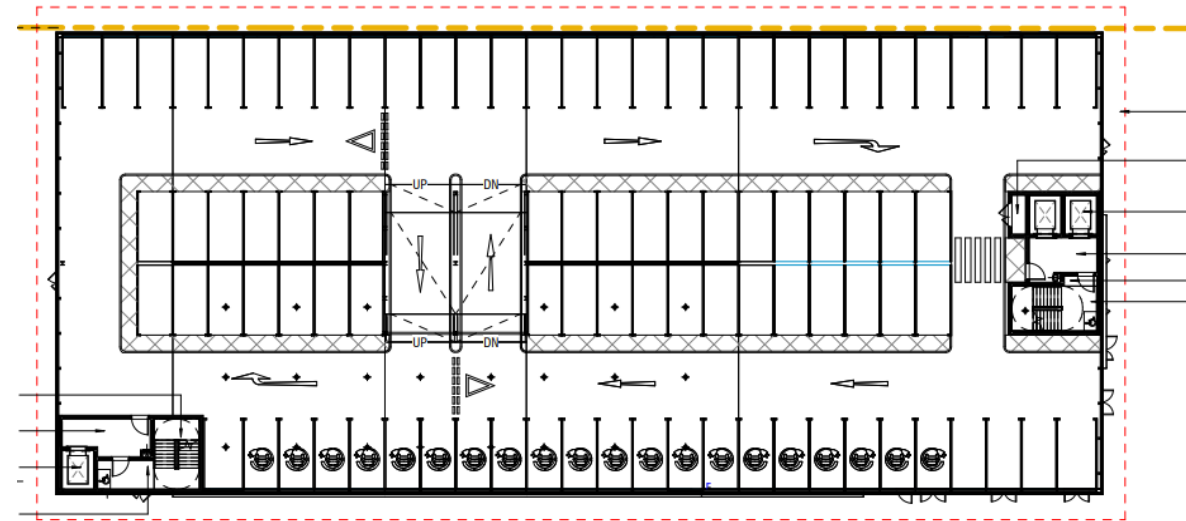
Location and Site Plans



MSCP Floor Plans

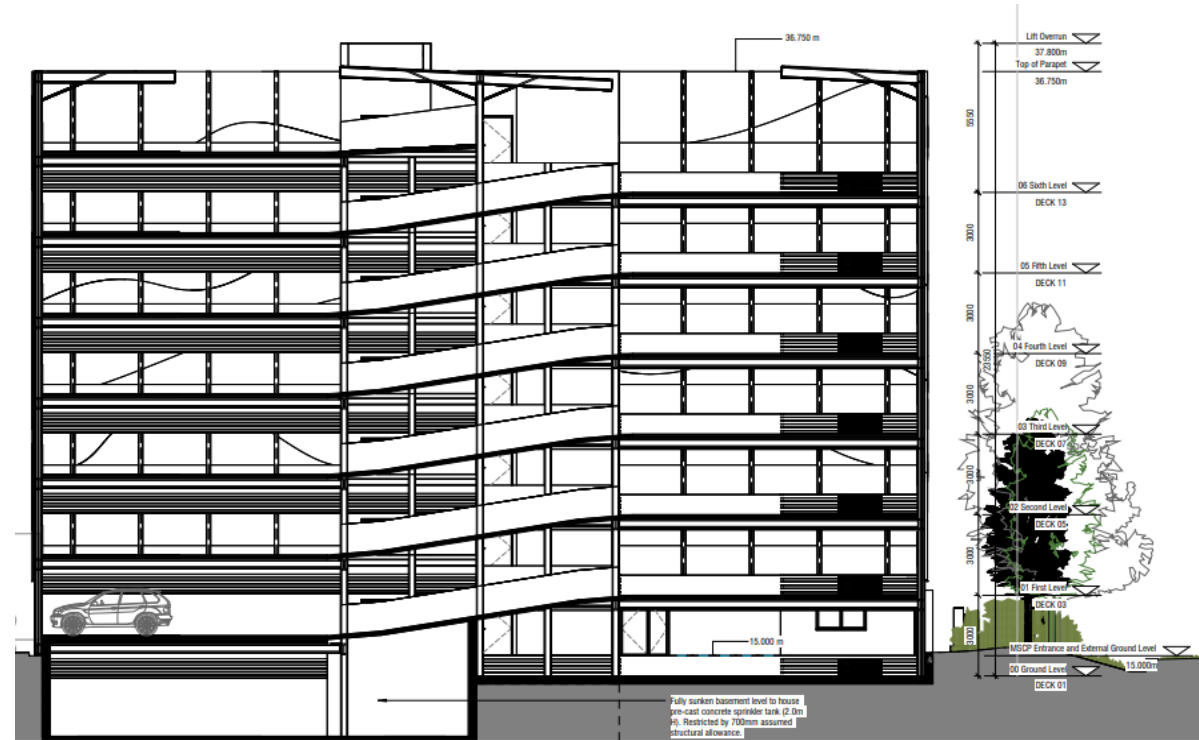
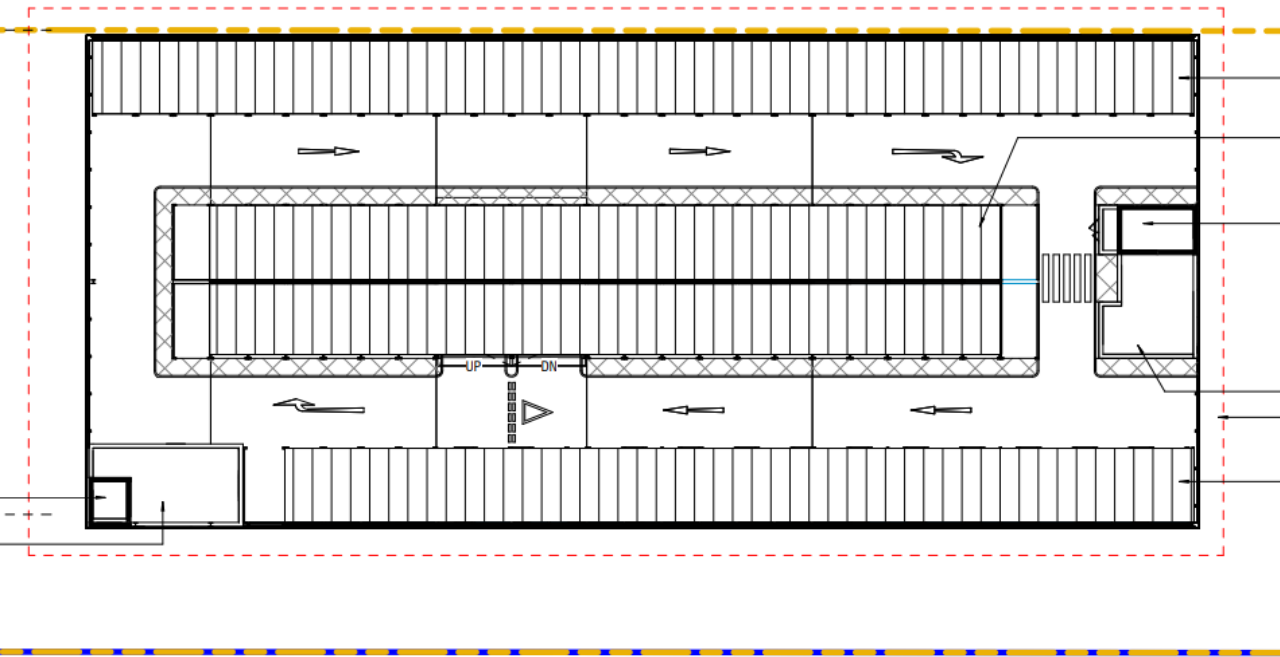


Ground Floor Plan



First Floor Plan (typical of first to sixth floors)

MSCP Roof Plan and Section



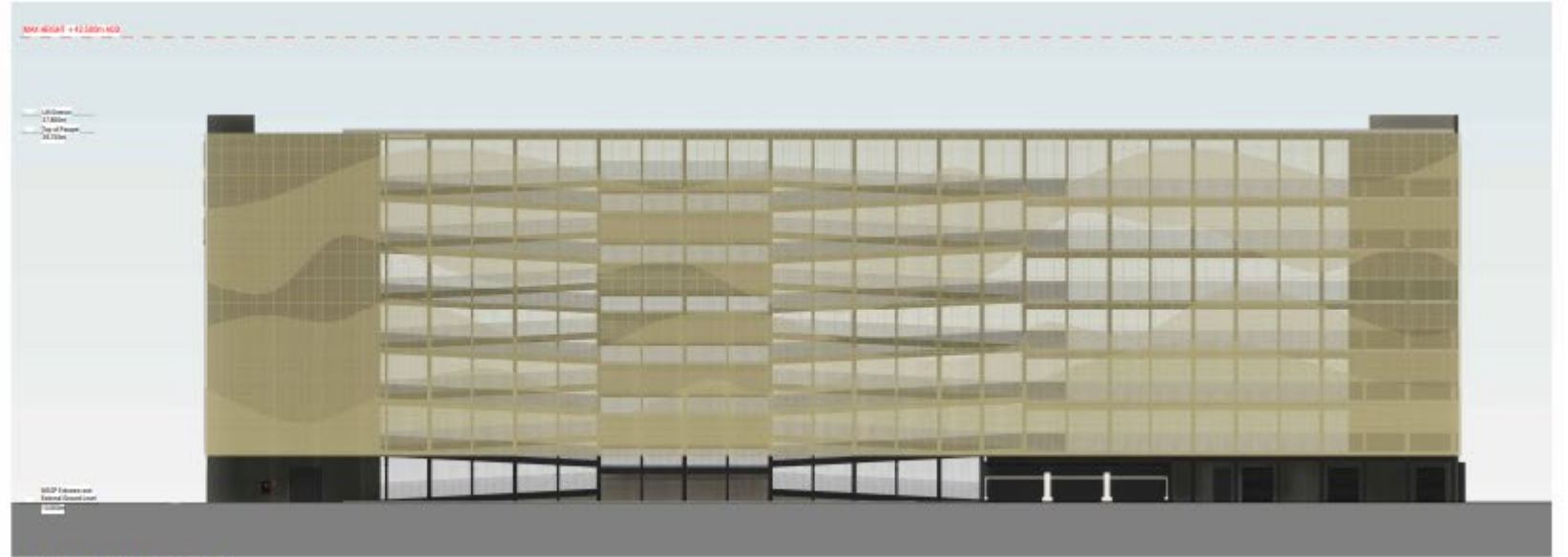
Roof Plan

MSCP Elevations



1 PROPOSED EASTERN ELEVATION

1:200



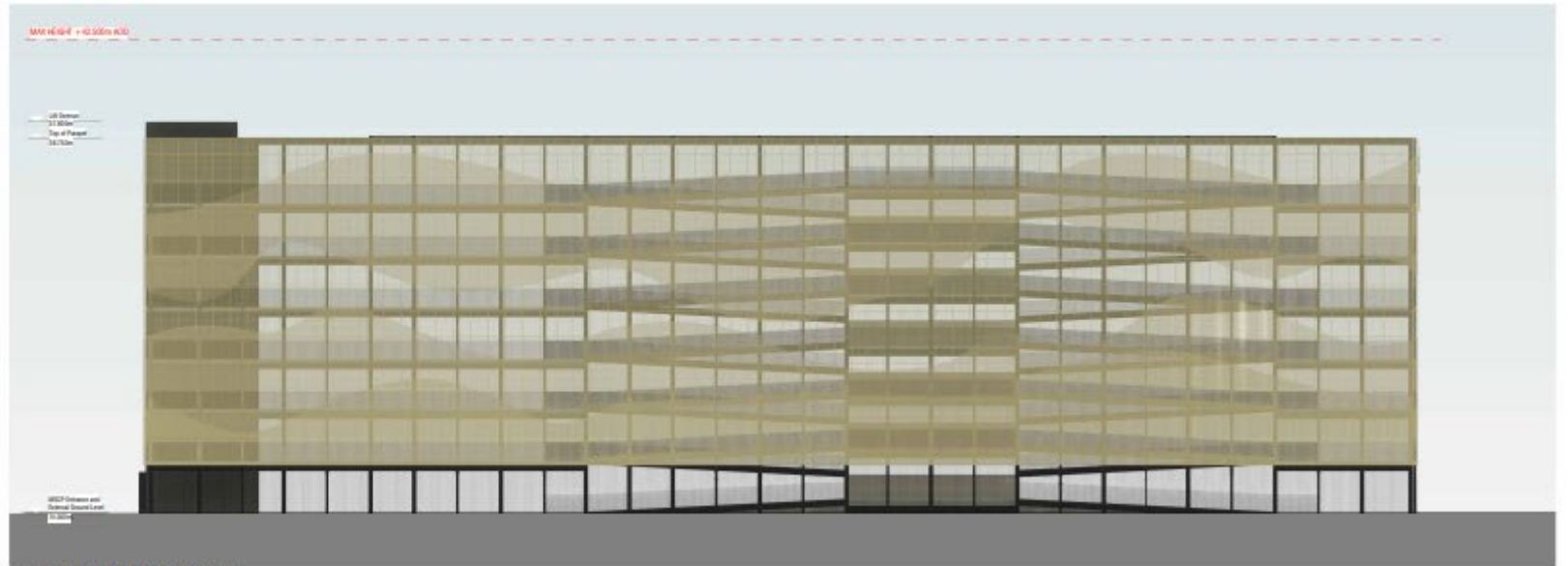
2 PROPOSED SOUTHERN ELEVATION

1:200



3 PROPOSED WESTERN ELEVATION

1:200



4 PROPOSED NORTHERN ELEVATION

1:200

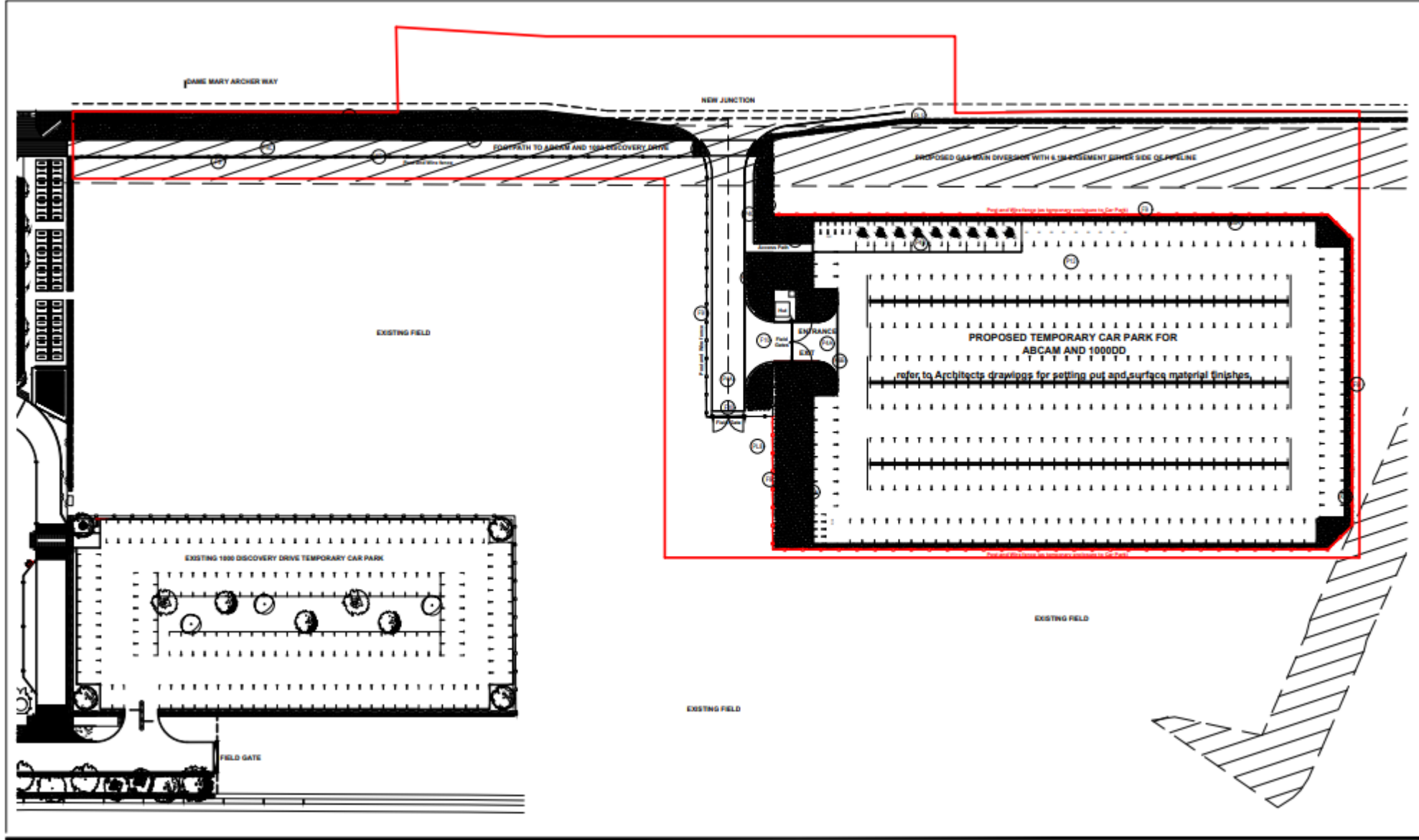
MSCP Visulisation



MSCP Visulisation



Temporary Car Park Landscape Masterplan



Temporary Car Park Site Layout

